

FOR SALE | Guide Price £375,000 | Pantmawr Road, Whitchurch, Cardiff CF14 7TF

TRADITIONAL RED-BRICK BAY-FRONTED MID-TERRACE DWELLING OFFERING CONTEMPORARY ACCOMMODATION THROUGHOUT. NO CHAIN.



CHAMBERS

EST. 1992



029 2052 2106

chambersestateagents.co.uk



Description

Chambers Estate Agents have received formal instructions to bring this traditional red-brick bay-fronted mid-terrace dwelling to the open market.

Located on Pantmawr Road, this property has been renovated throughout by the current owner and the accommodation briefly comprises storm porch, entrance hall, cloakroom/wc, living room, open plan kitchen/dining room, utility room, three bedrooms a family bathroom. The property further benefits from a new central heating system, full re-wire, new Upvc double glazed windows, new roof, off-road parking via tarmac drive and a particularly spacious rear garden.

Pantmawr Road is a residential location on the outskirts of Whitchurch village. This is an excellent location for professionals and young families with public transport links virtually on the doorstep, as well as the Taff Trail, and excellent school catchment for schools at primary and secondary levels.

Offered to the market with no chain and vacant possession.

Additional Information:

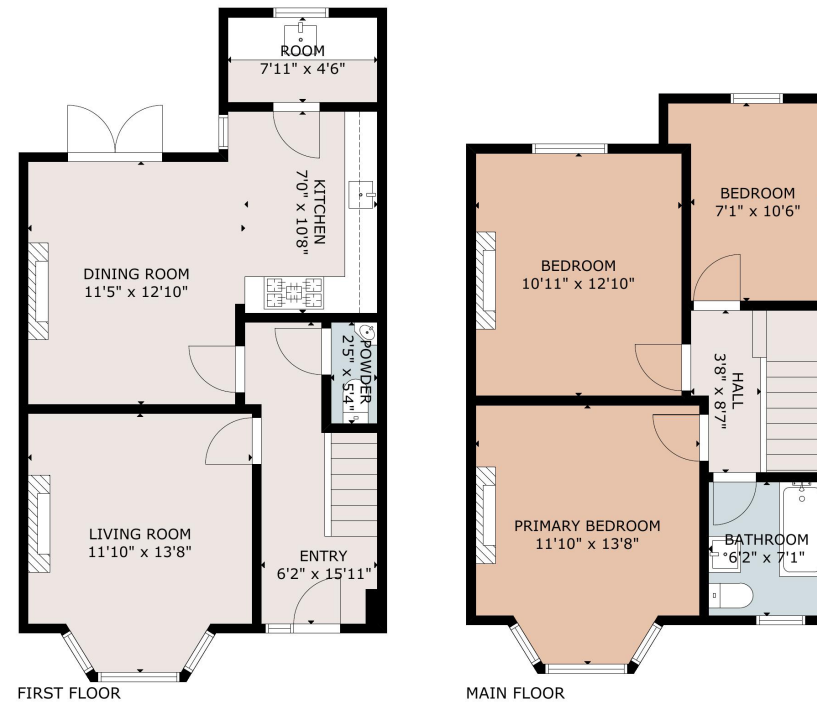
Tenure: Freehold. Please verify via your Solicitor.

Council Tax Band: E. Approximately £2233.00 per annum.

Land Transaction Tax: £9,000.00 based on the asking price.

Square Footage: 1016.00 Sq Ft. Please verify via your own means.

School Catchment Information: English medium primary catchment area: Coryton Primary School. English medium secondary catchment area: Whitchurch High School. Welsh medium primary catchment area: Ysgol Gymraeg Melin Gruffydd. Welsh medium secondary catchment area: Ysgol Gyfun Gymraeg Glantaf.



GROSS INTERNAL AREA
TOTAL: 1016 sq.ft
FIRST FLOOR: 527 sq.ft, SECOND FLOOR: 489 sq.ft
SIZE AND DIMENSIONS ARE APPROXIMATE, ACTUAL MAY VARY

Chambers
ESTATE AGENTS