

FOR SALE

Guide Price £650,000

The Croft, Heol Madoc, Whitchurch, Cardiff,
South Glamorgan CF14 1HB



🛏️ 4 Bedroom 🚿 2 Bathroom 🏠 3 Receptions



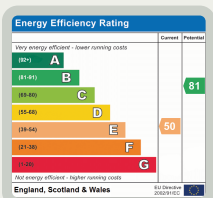
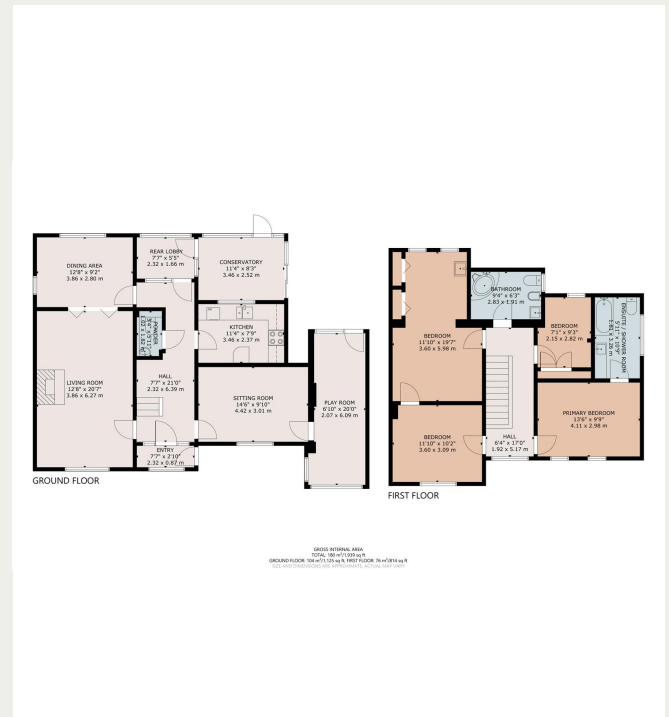
Property Descriptions

A rare opportunity to acquire a substantial four-bedroom detached residence in the highly sought-after suburb of Whitchurch, Cardiff. Now in need of modernisation, this property offers exceptional scope for a purchaser to create a bespoke family home. Offered for sale with no onward chain and vacant possession, it is a blank canvas with enormous potential.

The ground floor is generously proportioned, comprising an entrance porch leading into a welcoming hallway, a spacious living room, an adjoining dining area, a sitting room, a playroom, and a fitted kitchen. A greenhouse to the rear enjoys a pleasant outlook over the garden, while an inner lobby provides further storage and access to the cloakroom/WC. To the first floor, four well-sized bedrooms provide ample accommodation, three of which are particularly spacious. The second bedroom benefits from an ensuite shower room, while a family bathroom serves the remaining rooms.

Externally, a south-west facing rear garden offers an ideal setting for outdoor entertaining, while off-road parking to the front adds further convenience.

Positioned within one of Cardiff's most desirable residential



✉️ Info@chambersestateagents.co.uk

🌐 www.chambersestateagents.co.uk

📍 35 Merthyr Road, Cardiff, CF14 1DB

☎️ 0292 052 2106

Chambers

Estate Agents



Website

www.chambersestateagents.co.uk/



Email

info@chambersestateagents.co.uk



Phone

T: 0292 052 2106



Branch

35 Merthyr Road,
Cardiff CF14 1DB

Finding Homes Since 1992.