

**SOLD  
STC**



**Guide Price £699,995**

Bishops Road, Whitchurch, Cardiff, South  
Glamorgan CF14 1LY

4 Bedroom 2 Bathroom 3 Receptions



**Property Descriptions**

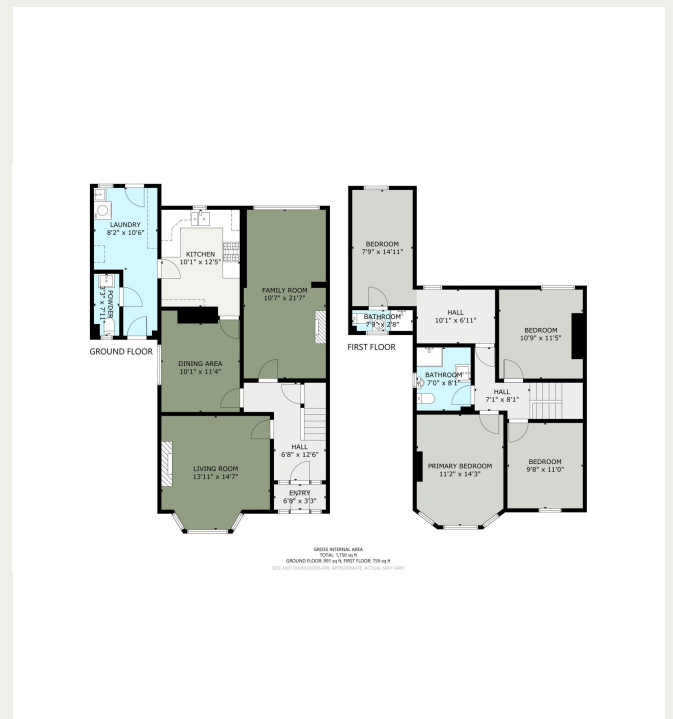
Chambers Estate Agents are delighted to be instructed on this period semi-detached dwelling located on one of Whitchurch's most sought after roads.

The accommodation, which has a range of period features, briefly comprises entrance porch, entrance hall, living room, sitting room, dining room, fitted kitchen, utility room, cloakroom/wc, four bedrooms, shower room and en-suite shower room. The property further benefits from gas central heating, Upvc double glazing, enclosed rear garden and off-road parking.

The property would now benefit from general modernisation throughout.

Bishops Road, which is nestled in the heart of Whitchurch, is a street of beautiful period homes just a short walk from a diverse range of village amenities on Merthyr Road including a wide selection of independent businesses such as a greengrocer, a delicatessen, cafes, restaurants and public houses as well as corporate businesses such as supermarkets, a bank and a sub post office.

Residents benefit from excellent public transport links into the city centre with a regular bus service from both Merthyr Road and Station Road, as well as Llandaff train station situated approximately 0.3 miles from the property with frequent direct trains to Cardiff Queen Street



[Info@chambersestateagents.co.uk](mailto:Info@chambersestateagents.co.uk)

[www.chambersestateagents.co.uk](http://www.chambersestateagents.co.uk)

35 Merthyr Road, Cardiff, CF14 1DB

0292 052 2106

# Chambers

Estate Agents



*Website*

[www.chambersestateagents.co.uk/](http://www.chambersestateagents.co.uk/)



*Email*

[info@chambersestateagents.co.uk](mailto:info@chambersestateagents.co.uk)



*Phone*

T: 0292 052 2106



*Branch*

35 Merthyr Road,  
Cardiff CF14 1DB

*Finding Homes Since 1992.*