

SOLD STC | Guide Price £599,995 | Lon Penllyn, Rhiwbina, Cardiff, South Glamorgan CF14 6BZ

A TRADITIONAL BAY-FRONTED SEMI-DETACHED BUNGALOW THAT HAS BEEN EXTENSIVELY MODERNISED AND EXTENDED BY THE CURRENT OWNERS TO PROVIDE CONTEMPORARY ACCOMMODATION OVER 2 FLOORS. NO CHAIN.



CHAMBERS

EST. 1992

Description

Chambers Estate Agents are delighted to bring to the open market this traditional bay-fronted semi-detached dwelling located on Lon Penllyn, Rhiwbina.

The accommodation, which is versatile in its use and has been extensively modernised and extended by the current owners, briefly comprises storm porch, entrance hall, superb open plan living room/dining room/fitted kitchen with standalone island, utility room, pantry, two bedrooms and a ground floor bathroom. The first floor comprises two further bedrooms and a shower room. The property further benefits from being completely re-wired to the latest regulations, new central heating system, off-road parking for at least 3 cars and a low maintenance rear garden, laid to lawn, with a patio area.

Lon Penllyn is a quiet residential cul-de-sac off Heol y Nant and is within close proximity to the villages of Rhiwbina and Whitchurch. This is a very convenient residential location within close proximity to a wide range of amenities, public transport links and schools at primary and secondary levels. There is easy access to the A470 and M4 link roads.

Offered to the market with no chain and vacant possession.

Additional Information:

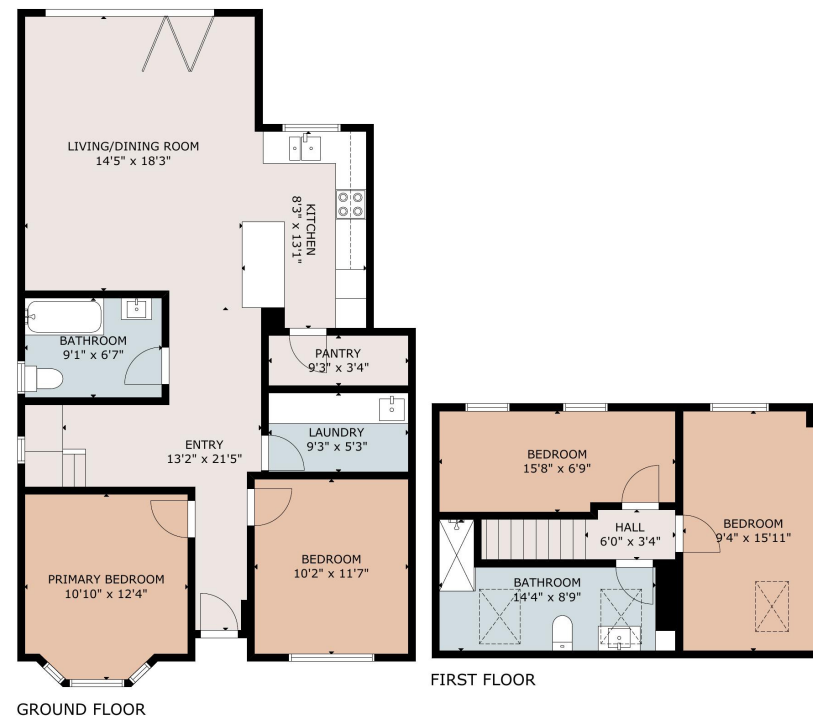
Tenure: Freehold. Please verify via your Solicitor.

Council Tax Band: Currently E. Approximately £2097.00 per annum.

Land Transaction Tax: £25,499.00 based on the asking price.

Square Footage: 1370.00 Sq Ft. Please verify via your own means.

School Catchment Information: English medium primary catchment area: Rhiwbeina Primary School. English medium secondary catchment area: Whitchurch High School. Welsh medium primary catchment area is Ysgol Y Wern. Welsh medium secondary catchment area: Ysgol Gyfun Gymraeg Glantaf.



GROSS INTERNAL AREA
TOTAL: 1,370 sq ft
GROUND FLOOR: 964 sq ft, FIRST FLOOR: 406 sq ft
SIZE AND DIMENSIONS ARE APPROXIMATE, ACTUAL MAY VARY

Chambers
ESTATE AGENTS