

FOR SALE

Guide Price £625,000

Heol Carne, Whitchurch, Cardiff, South Glamorgan CF14 1HD



🛏 4 Bedroom 🚿 2 Bathroom 🗨 2 Receptions

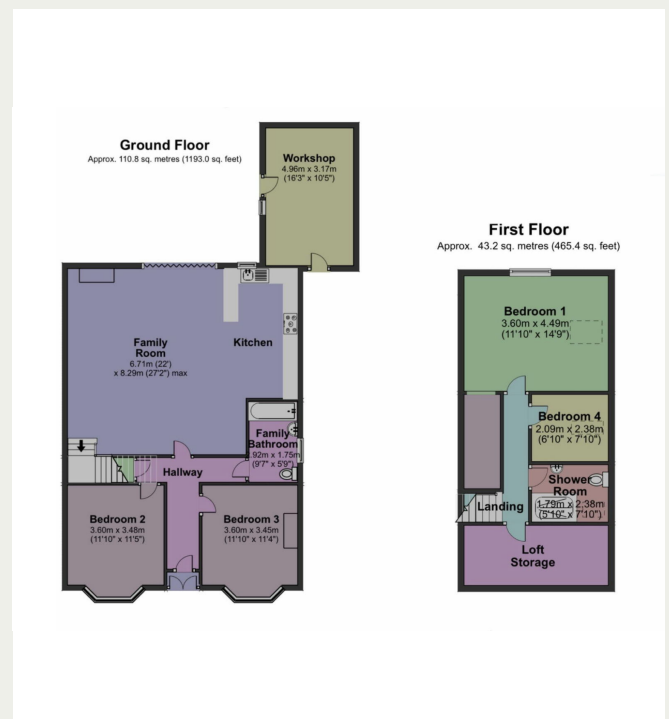


Property Descriptions

A Charming Detached Dormer Bungalow in a Prime Whitchurch Location!

Situated at the head of a peaceful cul-de-sac, backing onto the open green expanse of Whitchurch Common, this beautifully proportioned four-bedroom detached dormer bungalow offers over 1,650 sq. ft. of versatile accommodation across two floors. With off-road parking, a private enclosed rear garden, gas central heating, and double glazing, this home combines comfort with convenience in one of Cardiff's most sought-after suburbs.

The property, extended and improved by the current owners in 2016, provides flexible living space, with two well-sized bedrooms on the ground floor, complemented by a spacious living room, a well-appointed kitchen, and a modern family bathroom. The first floor offers two additional bedrooms, served by a contemporary shower room, creating an ideal balance between family living and guest accommodation.



✉ Info@chambersestateagents.co.uk

🌐 www.chambersestateagents.co.uk

📍 35 Merthyr Road, Cardiff, CF14 1DB

☎ 0292 052 2106

Chambers

Estate Agents



Website

www.chambersestateagents.co.uk/



Email

info@chambersestateagents.co.uk



Phone

T: 0292 052 2106



Branch

35 Merthyr Road,
Cardiff CF14 1DB

Finding Homes Since 1992.