

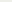
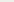
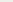
SOLD
STC



£599,995

Kingsland Road, Whitchurch, Cardiff, South

Glamorgan CF14 2EJ

 3 Bedroom  2 Bathroom  2 Receptions



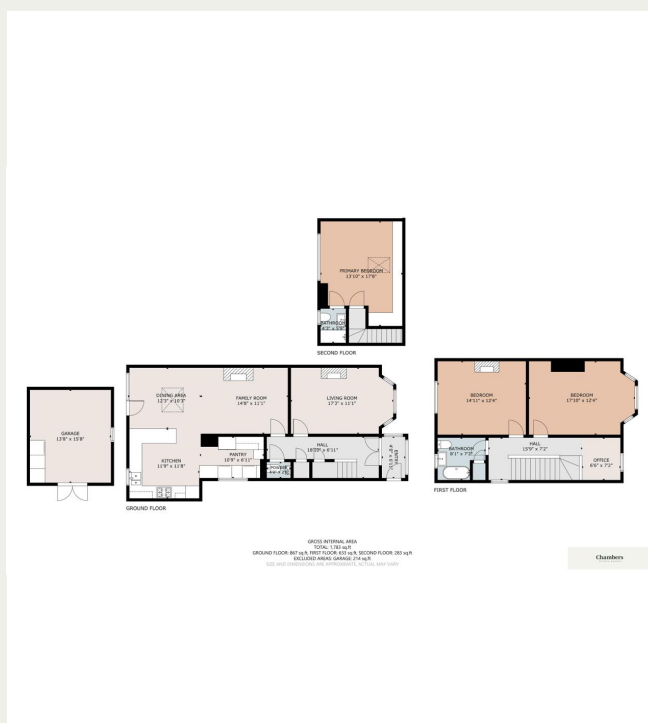
Property Descriptions

A rare opportunity to acquire a beautifully restored and architecturally enhanced period home, enviably positioned on Kingsland Road in the heart of Whitchurch—one of Cardiff's most desirable village suburbs.

This striking bay-fronted semi-detached residence combines timeless charm with contemporary family living, following an extensive schedule of renovation and extension completed between 2019 and 2020. Behind its handsome façade, the property opens into a welcoming porch and generous entrance hall, where handcrafted carpentry provides refined, built-in storage solutions, including thoughtfully designed units beneath the staircase.

Original flooring, lovingly restored, flows throughout much of the ground floor, immediately setting a tone of understated elegance. The principal reception room to the front offers a calm retreat, while to the rear, a beautifully conceived open-plan kitchen, dining and sitting room forms the heart of the home. This light-filled space is ideal for both relaxed family life and entertaining. The 'Innova'-designed kitchen features sleek lines and integrated appliances including a Zanussi oven and grill, Kenwood five-ring hob, and Hotpoint extractor. A separate utility room and a ground floor cloakroom/WC enhance the home's everyday practicality.

On the first floor are two generously sized bedrooms and a stylish family bathroom. The top floor is dedicated to a luxurious principal



 Info@chambersestateagents.co.uk

 www.chambersestateagents.co.uk

♀ 35 Merthyr Road, Cardiff, CF14 1DB

 0292 052 2106

Chambers

Estate Agents



Website

www.chambersestateagents.co.uk/



Email

info@chambersestateagents.co.uk



Phone

T: 0292 052 2106



Branch

35 Merthyr Road,
Cardiff CF14 1DB

Finding Homes Since 1992.