

FOR SALE

Guide Price £525,000

Manor Rise, Whitchurch, Cardiff



3 Bedroom 1 Bathroom 2 Receptions



Property Descriptions

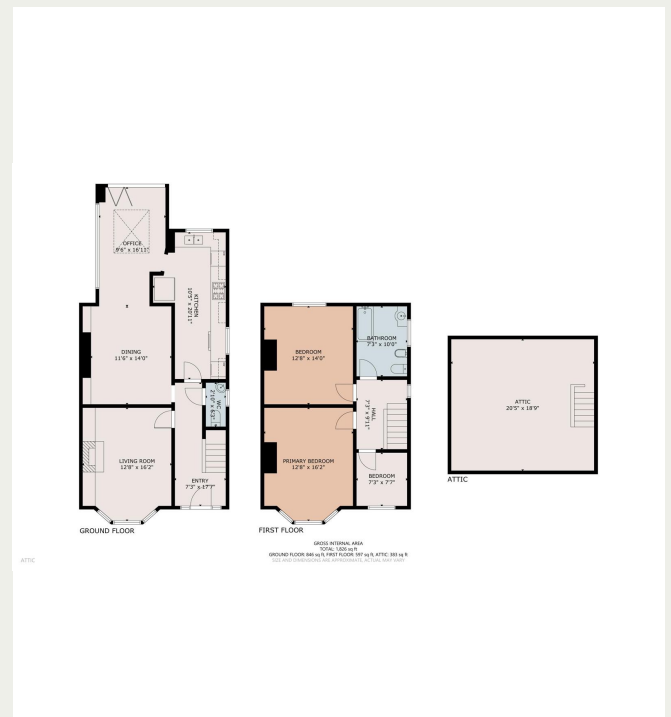
A distinguished 1930s bay-fronted residence in the heart of Whitchurch Village.

Positioned along the ever-popular Manor Rise, just moments from the green open space of Whitchurch Common, this elegant three-bedroom semi-detached home offers a rare opportunity to acquire a classic 1930s property within one of Cardiff's most desirable village settings.

Set behind a traditional red-brick façade with bay window frontage, the property provides well-balanced accommodation arranged over two floors, complemented by a generous garden, off-street parking and a garage. Internally, the accommodation briefly comprises a welcoming entrance hall, cloakroom/WC, a formal living room, and a versatile sitting/dining room that opens onto the garden. A thoughtfully arranged kitchen/breakfast room completes the ground floor. To the first floor are three bedrooms and a family bathroom, with access to a fully boarded loft offering ample storage and potential for conversion (subject to the necessary planning permissions).

Outside, the property enjoys mature, enclosed gardens to the side and rear—perfect for entertaining or quiet retreat—with further scope to extend and enhance, subject to planning.

Situated just a short walk from the boutiques, cafés and independent



✉ Info@chambersestateagents.co.uk

🌐 www.chambersestateagents.co.uk

📍 35 Merthyr Road, Cardiff, CF14 1DB

☎ 0292 052 2106

Chambers

Estate Agents



Website

www.chambersestateagents.co.uk/



Email

info@chambersestateagents.co.uk



Phone

T: 0292 052 2106



Branch

35 Merthyr Road,
Cardiff CF14 1DB

Finding Homes Since 1992.