

FOR SALE

Guide Price £375,000

Burghside, Wingfield Road, Whitchurch,
Cardiff, South Glamorgan CF14 1NJ



3 Bedroom 1 Bathroom 2 Receptions



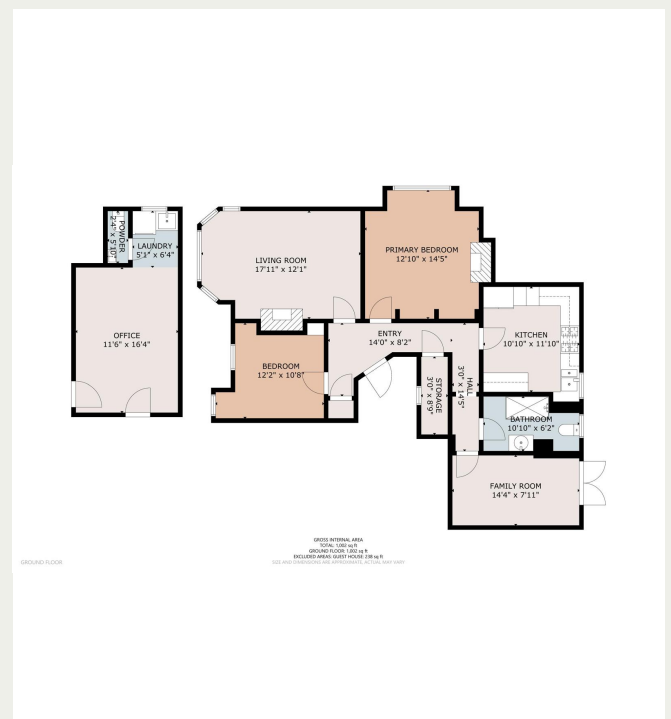
Property Descriptions

Situated on one of Whitchurch's most desirable tree-lined avenues, Burghside is a beautifully appointed ground floor apartment forming part of an elegant period residence. This spacious and versatile property offers a harmonious blend of period charm and modern comfort, ideal for both contemporary living and entertaining.

The accommodation comprises a welcoming entrance hall leading to a generously proportioned living and dining room, enhanced by high ceilings, ornate cornicing, and a feature fireplace. The adjoining kitchen is well-fitted and provides direct access to the rear garden. There are three well-sized bedrooms, offering flexibility for use as guest accommodation, work-from-home space, or additional reception rooms. A modern shower room serves the apartment. To the rear lies a low-maintenance enclosed garden, together with a detached garden room—formerly used as a salon and artist's studio—providing excellent potential for home working, business use, or creative pursuits.

Additional benefits include off-street parking, gas central heating, and double glazing throughout. The property is offered with no onward chain. Burghside would suit a variety of purchasers, including professionals commuting into the city, down-sizers seeking single-level living, first-time buyers looking for something distinctive, or those needing flexible, creative space with excellent connectivity.

Wingfield Road is a highly regarded residential street set within the



Info@chambersestateagents.co.uk

www.chambersestateagents.co.uk

35 Merthyr Road, Cardiff, CF14 1DB

0292 052 2106

Chambers

Estate Agents



Website

www.chambersestateagents.co.uk/



Email

info@chambersestateagents.co.uk



Phone

T: 0292 052 2106



Branch

35 Merthyr Road,
Cardiff CF14 1DB

Finding Homes Since 1992.