

# Chambers

Estate Agents



7 Soudrey Way, Cardiff Bay, Cardiff, South Glamorgan, CF10 5FW  
Price Reduced to £145,000

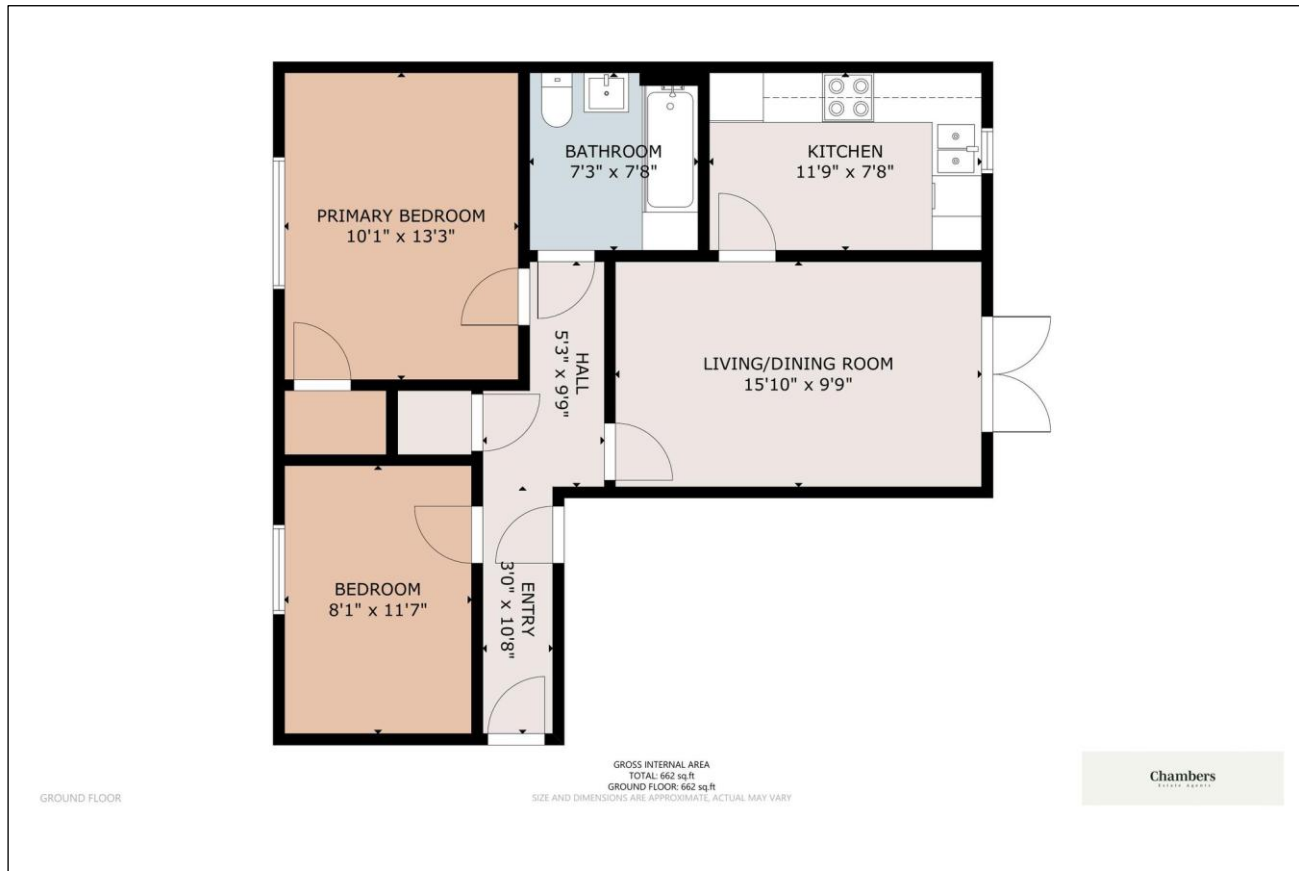
# Chambers

Estate Agents



# 7 Soudrey Way, Cardiff Bay, Cardiff, South Glamorgan, CF10 5FW

Price Reduced to £145,000



2 Bedrooms



1 Bathrooms



1 Receptions

A contemporary first-floor apartment in the heart of Cardiff Bay offering stylish waterside living. Features two double bedrooms, open-plan lounge with Juliette balcony, sleek modern kitchen, and allocated parking. Long lease, and no onward chain. Perfect for professionals or investors.

Tenure: Leasehold  
Council Tax Band:

EPC: D  
Total area (approx.): 0 sq ft



[chambersestateagents.co.uk](http://chambersestateagents.co.uk)

## Chambers

Estate Agents

35 Merthyr Road, Whitchurch, Cardiff, CF14 1DB  
[info@chambersestateagents.co.uk](mailto:info@chambersestateagents.co.uk)  
029 2052 2106

These particulars have been produced as a general guide for this property only and no other purpose. They are not an offer or contract. You should not rely on statements in these particulars or by word of mouth or in writing as being factually accurate about the property, its condition or its value. Neither any primary agent or joint agent has any authority to make or give any representations or warranties in relation to the property, and accordingly any information given is entirely without responsibility on the part of the agents or lessor(s). The photographs show only certain parts of the property as they appeared at the time they were taken. Any areas, measurements and distances given are approximate only. Any reference to alterations to, or use of, any part of the property does not mean that any necessary planning, building regulations or other consent has been obtained nor have any services, equipment or facilities been tested. A lessee should satisfy themselves by inspection or otherwise. The VAT position relating to the property may change without notice. Please contact us for further information regarding the approved Client Money Protection (CMP) scheme and the property redress scheme which we are a member of.