

# Chambers

Estate Agents



Bishops Road, Whitchurch, Cardiff, South Glamorgan, CF14 1LX  
Guide Price £899,995



## Bishops Road, Whitchurch, Cardiff, South Glamorgan, CF14 1LX

Guide Price £899,995

A beautifully restored Edwardian semi-detached home on sought-after Bishop's Road, offering stylish, extended accommodation with four bedrooms, superb kitchen/dining space and elegant reception rooms. Benefiting from rare side access, garage and a south-facing garden, all within walking distance of Whitchurch village amenities.



4 Bedrooms



2 Bathrooms



3 Receptions





The accommodation unfolds with a welcoming entrance porch leading into an elegant hallway, setting the tone for the rest of the property. The principal reception rooms include a gracious living room and an inviting sitting room, both offering generous proportions and an abundance of natural light. To the rear, the home opens into a superb kitchen/dining space designed with modern family life in mind, complemented by a cosy snug that provides a more intimate retreat. Practicality is equally well considered, with a separate utility room and cloakroom/WC enhancing day-to-day living.

Upstairs, the property offers four well-appointed bedrooms, including a principal suite with its own en-suite shower room, alongside a stylish family bathroom. The interiors throughout reflect a careful attention to detail, blending classic architectural features with contemporary finishes to create a home of both comfort and distinction.

Externally, the property further distinguishes itself with rare side access, a detached garage and an enclosed south-facing rear garden enjoying a sunny aspect, ideal for outdoor entertaining and family enjoyment. Further advantages include gas central heating via a combination boiler and uPVC double glazing throughout. This is a truly special opportunity and must be seen.

Tenure: Freehold (TBC)  
Council Tax Band: G

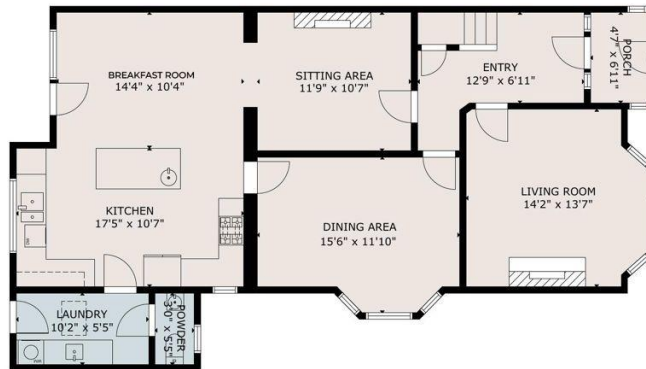
EPC: To be confirmed  
Total area (approx.): 1854 sq ft



# 85 Bishops Road, Whitchurch, Cardiff, South Glamorgan, CF14 1LX



FIRST FLOOR



GROUND FLOOR

GROSS INTERNAL AREA  
TOTAL: 1,854 sq ft  
GROUND FLOOR: 1,065 sq ft, FIRST FLOOR: 789 sq ft  
SIZE AND DIMENSIONS ARE APPROXIMATE, ACTUAL MAY VARY



[chambersestateagents.co.uk](http://chambersestateagents.co.uk)

**Chambers**  
Estate Agents

35 Merthyr Road, Whitchurch,  
Cardiff, CF14 1DB

[info@chambersestateagents.co.uk](mailto:info@chambersestateagents.co.uk)  
029 2052 2106

These particulars have been produced as a general guide for this property only and no other purpose. They are not an offer or contract. You should not rely on statements in these particulars or by word of mouth or in writing as being factually accurate about the property, its condition or its value. Neither any primary agent or joint agent has any authority to make or give any representations or warranties in relation to the property, and accordingly any information given is entirely without responsibility on the part of the agents or lessor(s). The photographs show only certain parts of the property as they appeared at the time they were taken. Any areas, measurements and distances given are approximate only. Any reference to alterations to, or use of, any part of the property does not mean that any necessary planning, building regulations or other consent has been obtained nor have any services, equipment or facilities been tested. A lessee should satisfy themselves by inspection or otherwise. The VAT position relating to the property may change without notice. Please contact us for further information regarding the approved Client Money Protection (CMP) scheme and the property redress scheme which we are a member of.