

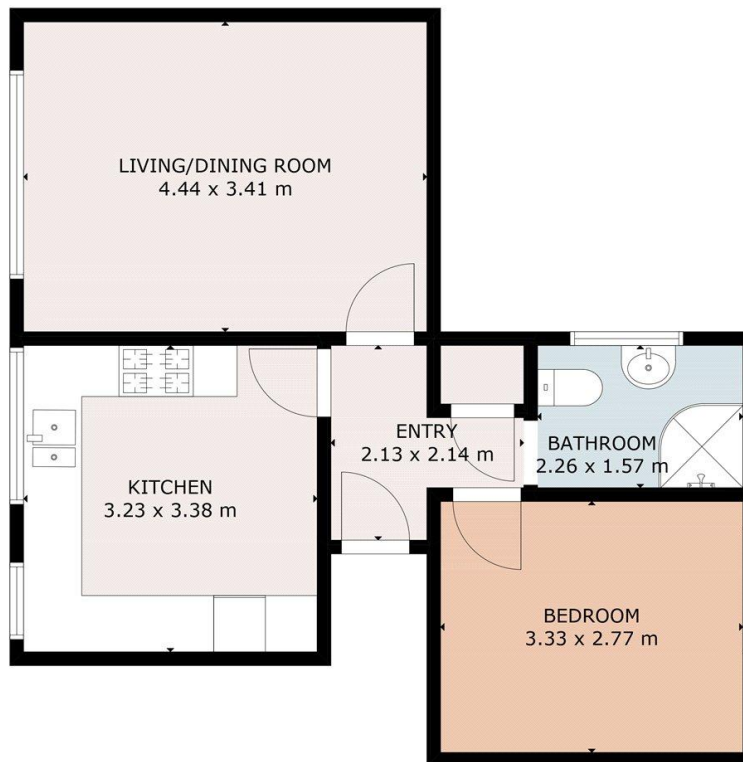
Chambers

Estate Agents



Flat 3, The Willows, Old Church Road,
Guide Price: £160,000

Flat 3, The Willows, Old Church Road, Guide Price: £160,000



GROUND FLOOR

GROSS INTERNAL AREA
TOTAL: 45 m²
GROUND FLOOR: 45 m²
SIZE AND DIMENSIONS ARE APPROXIMATE, ACTUAL MAY VARY



1 Bedrooms



1 Bathrooms



1 Receptions

A well-presented first-floor apartment in a purpose-built development on the edge of Whitchurch village. Offering a living room, modern kitchen, double bedroom and shower room, with parking and communal gardens. Share of freehold with long lease. No onward chain. Close to amenities, transport links and the A470/M4.



Tenure: Share of Freehold
Council Tax Band: C

EPC: C
Total area (approx): 484sq ft

<http://chambersestateagents.co.uk/>

Chambers
Estate Agents

35 Merthyr Road
Whitchurch, CF14 1DB

sales@chambersestateagents.co.uk
029 2052 2106

These particulars have been produced as a general guide for this property only and no other purpose. They are not an offer or contract. You should not rely on statements in these particulars or by word of mouth or in writing as being factually accurate about the property, its condition or its value. Neither any primary agent or joint agent has any authority to make or give any representations or warranties in relation to the property, and accordingly any information given is entirely without responsibility on the part of the agents or lessor(s). The photographs show only certain parts of the property as they appeared at the time they were taken. Any areas, measurements and distances given are approximate only. Any reference to alterations to, or use of, any part of the property does not mean that any necessary planning, building regulations or other consent has been obtained nor have any services, equipment or facilities been tested. A lessee should satisfy themselves by inspection or otherwise. The VAT position relating to the property may change without notice. Please contact us for further information regarding the approved Client Money Protection (CMP) scheme and the property redress scheme which we are a member of.